

- ◆ Trump Effect?
- ◆ Update of a Redo—Part 1
- ◆ Introducing Temple Furniture

Your ONE-STOP Solution for Distinctive Home Interiors



Molli & Maddyn's Memo

As you can tell from the picture above, we love snuggling with Daddy. And Daddy likes to snuggle with us.

Our snuggling makes him just as sleepy as it does us.

We are looking forward to snuggling with Nana and Papa when they visit us in a few weeks for Maddyn's baptism.

Molli & Maddyn
Nana's granddaughters

Some say it might be the Trump Effect

I'm not sure what is causing it, but ever since the presidential election last November things have exploded here at Interior Expressions.

We have as much business *booked* for the first half on 2017 as we did in all of 2016, plus many prospects we are working with. Much of our growth is coming in from Kitchen and Bath remodeling as well as other major remodels.

When I've mentioned this to some of you, I've heard some describe it as the Trump Effect. Whether that's it or not I don't really care.

As I visit with our contractors and sub-contractors, as well as other business owners, I'm hearing much the same.

Whether it's the Trump Effect or not, we'll enjoy while we can, because we all know it will not last forever, it never does.

I'm so proud of our team in that so many people placing their trust in us. We know these are major decisions, especially when it comes to significant expenditures such as remodeling a kitchen. We just ask your patience as we gear-up to handle this huge and sudden influx of business.

Upcoming Iowa Trip

As Molli & Maddyn mentioned in their memo, my husband and I are very much looking forward to our trip to Iowa in mid-March for Maddyn's baptism. Our daughter will be one of Maddyn's god-parents.

From pictures and video our son and daughter-in-law have sent since the first of the year, Maddyn has really grown fast. Her personality has evolved so much since we first saw her at about a month old.

I'm so looking forward to lots of Nana cuddling time with both our granddaughters.



Until Next Month,

Betty Jones

Thank You for Your Referrals

Dawn & Fred Warshay referred Abby & Randy Greene
Kathy Swendsen & Steve Nazian referred Lanna Keller & Terry Walker
Jeff Sprunger referred Billie May Markus

Referrals are the lifeblood of our business. Thank you for these and all your referrals

Update of a Redo—Part 1

Imagine my surprise as fellow designer Sara Benjamin and I drove up to the home of Abby and Randy.

It had been a few years, so I didn't recognize the address, until I saw the home. I had helped the previous owners make the house their home.

Now Abby and Randy were asking us to do the same for them. Abby said they bought this particular home due to the warmth of the home, in terms of colors, wood floor, crown mouldings, and other touches I helped the previous owners with.

Besides their personal treasures to accommodate, Abby's mom was downsizing, adding to the design challenge. We wanted to honor their family's antiques as well as Abby's large collection of Chinese artifacts, as this was Abby's area of study in college.

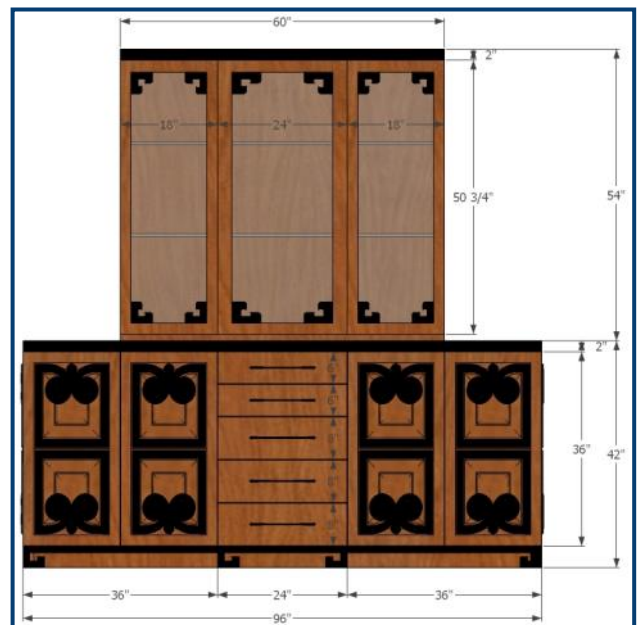


Custom China Hutch/Buffer

This china hutch/buffet was custom built by one of our fine woodworkers.

We wanted the look and colors to tie back to the dining room table and chairs. So, we decided to duplicate the Chinese letters carved in the back of the dining room chairs.

We finished the hutch/buffet with a granite top, allowing ample room for entertaining or the Thanksgiving turkey.



Construction drawing for our woodworker



Foyer Update

The foyer contains a large niche, a perfect place for the marble topped table that has been in the family for generations.

We had a very delicate vintage Chinese scroll, from 1917, which we framed in a shadow box with decorative hardware to keep in unrolled.

We painted the niche in a green color which helped make the wording on the scroll stand-out.



PAUL HARVEY
And now...the rest of the story...

NOTE:

Part 2 of this project will be presented in our April newsletter.

Be on the look-out for that April issue for, as Paul Harvey so eloquently said, "And now...The rest of the story..."

Custom Entertainment Center

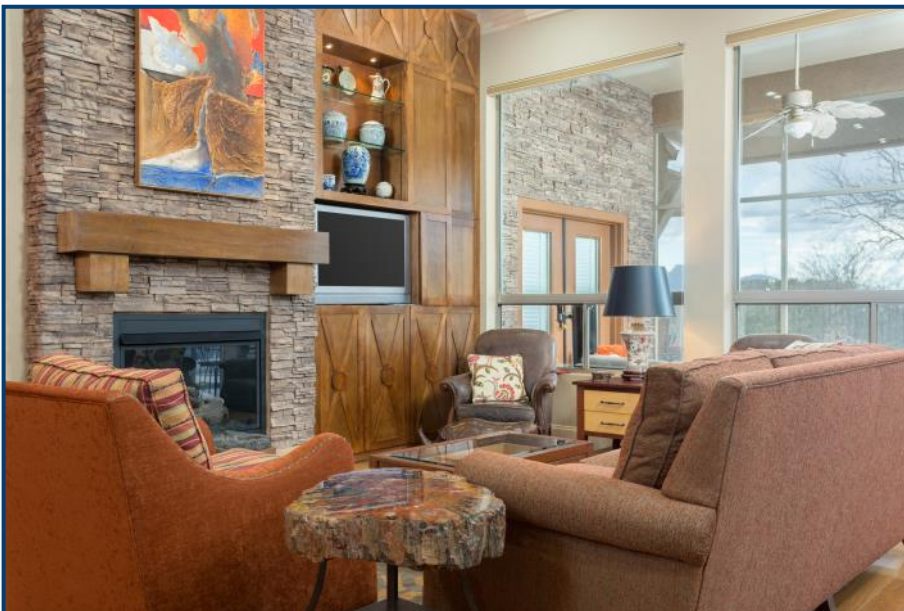
Using the reverse colors in the hutch/buffet, we designed an entertainment center. The A/V control boxes are in the cabinet below the TV, vented through the back of the TV panel back, to keep everything from over-heating.

The leopard on top shelf is another family treasure that found a home. We reupholstered mom's 2 high back carved chairs, shown above to the right of the cocktail table, with an updated susonie print.

Their gold sofa and loveseat were very low to the ground. Our upholster made new block wenge alder feet which allowed us to bring this furniture up to a comfortable height. Solving challenges like this is what we do.

It has been very exciting working with Betty Jones and her staff. The subcontractors all did a wonderful job. Everyone who walks into our house compliments us. We so thank the Washay's for recommending Interior Expressions.

Abby & Randy Greene, SaddleBrooke



Fireplace Wall

The fireplace wall with cabinetry we did for the former owner.

In this room we added a new rug, a printed swivel chair and solid woven sofa. Both upholstered pieces are from our private label Comfort-Fit™ line of furniture.

We also built a special cocktail table with a glass shadow box top, so Abby can change out small items from their trips abroad. We also made a 2 drawer end table (shown between leather chairs) in cherry and maple, to add storage and add a light color in the room.



11015 N. Oracle Rd. Suite 121
Oro Valley, AZ 85737
520-825-8256

AS FEATURED IN ...



Arizona Daily Star

THE WALL STREET JOURNAL

New Addition to our Comfort-Fit™ Upholstery Program

We've had two voids in our exclusive Comfort-Fit™ fabric/leather upholstery program. The first being *motion* products (recliners, gliders, sliders), and the other being **sofa sleepers** with the often requested **AirDream™** mattress.



Introducing Temple Furniture

We have filled both of these voids with the addition of Temple Furniture, a 3rd generation family owned manufacturer in the little town of Maiden, NC, started in 1962 by Cecil and Mossie Parker.

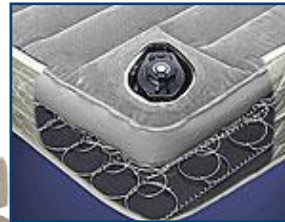
Temple has a proven record of quality products, outstanding customer service, and superior value. The three most important requirements we have of all our supplier partners.

Sofa Sleeper with AirDream™ Mattress

Temple's sofa sleepers offer the option of the popular AirDream™ mattress. The AirDream™ mattresses offer the same luxury feel as premium mattresses. This patented technology combines the support of steel inner-springs, with the cushioning comfort of air. The firmness can be personalized easily within seconds.



Queen Sofa Sleeper Example



AirDream™ Cut-Away



Recliner Highlights/Options

- ♦ Many styles and shapes
- ♦ Leather and Fabric
- ♦ Power Recline Option:
Electrical cord or battery powered
- ♦ USB charging port
- ♦ Various seat depths and widths for that perfect fit

Warranty

- ♦ Lifetime Limited Warranty on Frame, Springs and Cushions
- ♦ One Year Warranty on their stocked fabrics
- ♦ See actual warranty for details